

For your patients starting therapy with XEMBIFY— Help patients get strong support right from the start



Request a free XEMBIFY Patient Starter Kit

The Patient Starter Kit supports and augments the training patients receive from their healthcare provider or specialty pharmacy

- **MAIN Kit** – Designed for all XEMBIFY patients
- **PEDIATRIC ADD-ON Kit** – For patients 2 to 12 years of age



It takes just one call to order a free XEMBIFY Patient Starter Kit



Call XEMBIFY Connexions at
1-844-MYXEMBIFY
(1-844-699-3624)
Mon-Fri 8 AM-8 PM Eastern Time



XEMBIFY Connexions will obtain
patient consent as needed and
determine how best to send the Kit



XEMBIFY Connexions coordinates
sending the kit to the patient via
specialty pharmacy OR direct mail



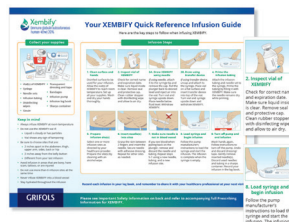
The XEMBIFY Patient Starter Kit provides helpful tools and information so patients can get the most out of their treatment. Kit includes:



XEMBIFY Patient Brochure



Infusion Log Book



Quick Reference Guide



Self-administration Video

Kit also includes comfort and convenience items including the Buzzy® Mini Personal.



Pediatric Add-on Kit includes:

“Our Immune System” book | Pediatric Therapy Journal | Comfort and convenience items

GRIFOLS

Please see Important Safety Information on back, and refer to accompanying full Prescribing Information for XEMBIFY.

Indication

XEMBIFY[®] (immune globulin subcutaneous human-klhw) is a 20% immune globulin indicated for treatment of primary humoral immunodeficiency disease (PIDD) in patients 2 years of age and older. XEMBIFY is for subcutaneous administration only.

Important Safety Information

WARNING: THROMBOSIS

- **Thrombosis may occur with immune globulin products, including XEMBIFY. Risk factors may include: advanced age, prolonged immobilization, estrogens, indwelling vascular catheters, hyperviscosity, and cardiovascular risk factors. Thrombosis may occur in the absence of known risk factors**
- **For patients at risk of thrombosis, administer XEMBIFY at the minimum dose and infusion rate practicable. Ensure adequate hydration in patients before administration. Monitor for signs and symptoms of thrombosis and assess blood viscosity in patients at risk of hyperviscosity**

Contraindications

XEMBIFY is contraindicated in patients who have had an anaphylactic or severe systemic reaction to the administration of human immune globulin. It is contraindicated in IgA-deficient patients with antibodies against IgA and a history of hypersensitivity.

Warnings and Precautions

Hypersensitivity. Severe hypersensitivity reactions may occur with immune globulin products, including XEMBIFY. In case of hypersensitivity, discontinue infusion immediately and institute appropriate treatment. XEMBIFY contains IgA. Patients with known antibodies to IgA may have a greater risk of developing potentially severe hypersensitivity and anaphylactic reactions.

Thrombosis. Thrombosis may occur following treatment with immune globulin products, including XEMBIFY. Thrombosis may occur in the absence of known risk factors. In patients at risk, administer at the minimum dose and infusion rate practicable. Ensure adequate hydration before administration. Monitor for signs and symptoms of thrombosis and assess blood viscosity in patients at risk of hyperviscosity.

Aseptic meningitis syndrome (AMS). AMS may occur with human immune globulin treatment, including XEMBIFY. Conduct a thorough neurological exam on patients exhibiting signs and symptoms to rule out other causes of meningitis. Discontinuation of treatment has resulted in remission within several days without sequelae.

Renal dysfunction/failure. Acute renal dysfunction/failure, acute tubular necrosis, proximal tubular nephropathy, osmotic nephrosis, and death may occur with use of human immune globulin products, especially those containing sucrose. XEMBIFY does not contain sucrose. Ensure patients are not volume-depleted prior to starting infusion. In patients at risk due to preexisting renal insufficiency or predisposition to acute renal failure, assess renal function prior to the initial infusion of XEMBIFY and again at appropriate intervals thereafter. If renal function deteriorates, consider discontinuation.

Hemolysis. XEMBIFY may contain blood group antibodies that may cause a positive direct antiglobulin reaction and hemolysis. Monitor patients for clinical signs and symptoms of hemolysis. If signs and symptoms are present after infusion, perform confirmatory lab testing.

Transfusion-related acute lung injury (TRALI).

Noncardiogenic pulmonary edema may occur in patients following treatment with immune globulin products, including XEMBIFY. Monitor patients for pulmonary adverse reactions. If TRALI is suspected, perform appropriate tests for the presence of antineutrophil and anti-HLA antibodies in both the product and patient serum. TRALI may be managed using oxygen therapy with adequate ventilatory support.

Transmissible infectious agents. Because XEMBIFY is made from human blood, it may carry a risk of transmitting infectious agents, eg, viruses, the variant Creutzfeldt-Jakob disease (vCJD) agent, and, theoretically, the Creutzfeldt-Jakob disease (CJD) agent. No cases of transmission of viral diseases, vCJD, or CJD have ever been associated with the use of XEMBIFY.

Interference with lab tests. After infusion of XEMBIFY, passively transferred antibodies in the patient's blood may yield positive serological testing results, with the potential for misleading interpretation.

Adverse Reactions

The most common adverse reactions in $\geq 5\%$ of subjects in the clinical trial were local adverse reactions, including infusion-site erythema (redness), infusion-site pain, infusion-site swelling (puffiness), infusion-site bruising, infusion-site nodule, infusion-site pruritus (itching), infusion-site induration (firmness), infusion-site scab, infusion-site edema, and systemic reactions including cough and diarrhea.

Drug Interactions

Passive transfer of antibodies may transiently interfere with the immune responses to live attenuated virus vaccines (eg, measles, mumps, rubella, and varicella).

Please see accompanying full Prescribing Information for XEMBIFY.